



5 Jenna Court Invermay Park VIC

4 2 3

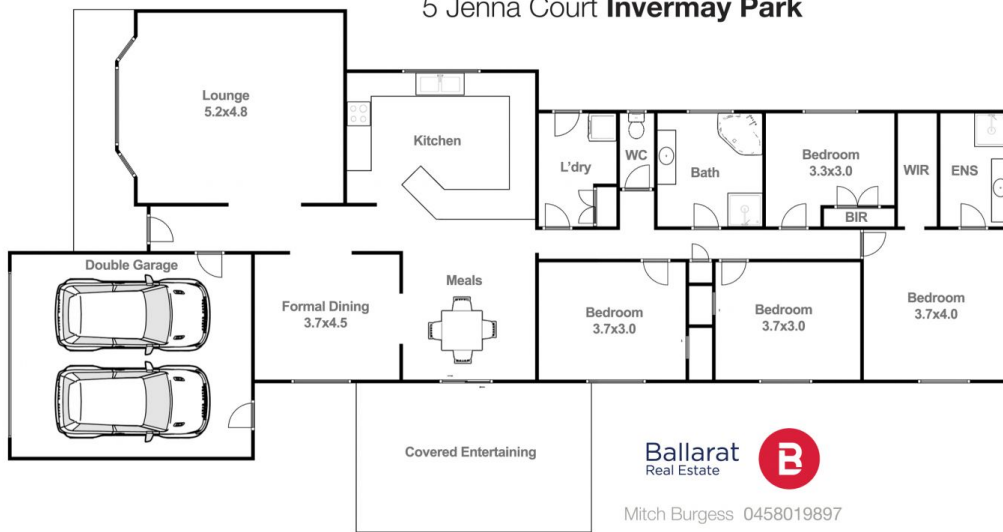
Positioned in a quiet court in the desirable Invermay Park area is this large, four bedroom brick home on an allotment of around 836m² (approx). This location is sought after for its proximity to schools, shopping, parks, Midlands Golf Course and access to the Melbourne Freeway. Inside the property you will find four well sized bedrooms equipped with built in robes, while the master is complete with a walk in robe and ensuite. The kitchen is large with plenty of bench space and opens to the dining area. There are two spacious living areas, one at the front of the property features a large bay window that lets in the natural light and warmth with a view of the sun as it sets. The family bathroom has a spa bath and separate shower while there is also a full laundry with drying cupboard and walk in linen. The property has heating and cooling as well as an insta ...

Price : \$ 610,000
Land Size : 836 sqm
View : <https://www.ballaratrealestate.com.au/sale/vic/ballarat-western-district/invermay-park/residential/house/8050170>



Mitchell Burgess
03 5331 2233
0458019897

5 Jenna Court **Invermay Park**



This plan is for illustrative purposes only, floor plan proportions and scale are approximate. Plan prepared by PLP Ballarat © 2024 for Ballarat Real Estate.