



79 Masada Boulevard Winter Valley VIC



Situated in the sought-after area of Winter Valley in Ballarat, 79 Masada Boulevard presents an exceptional opportunity for development or a Business from home nest egg (STCA). This expansive approximately 2-acre allotment offers a range of possibilities, from residential land subdivision to the creation of detached dwellings or even a retirement village or Land Lease Community (LLC).

- This approximately 2-acre allotment, located in the prime area of Ballarat.
- Development opportunities (STCA) include residential land subdivision, detached dwellings, retirement village or Land Lease Community (LLC).
- Concept scheme for 18 lots in a prime Ballarat location.
- Existing 4-bedroom, 2-bathroom dwelling at the entrance of the allotment.
- A short stroll to the new Delacombe Town Centre (DTC).

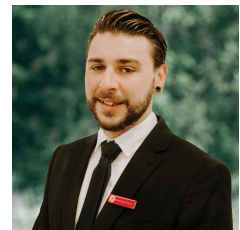
Price : \$1,850,000 - \$2,035,000

Building Size : 1 sqm

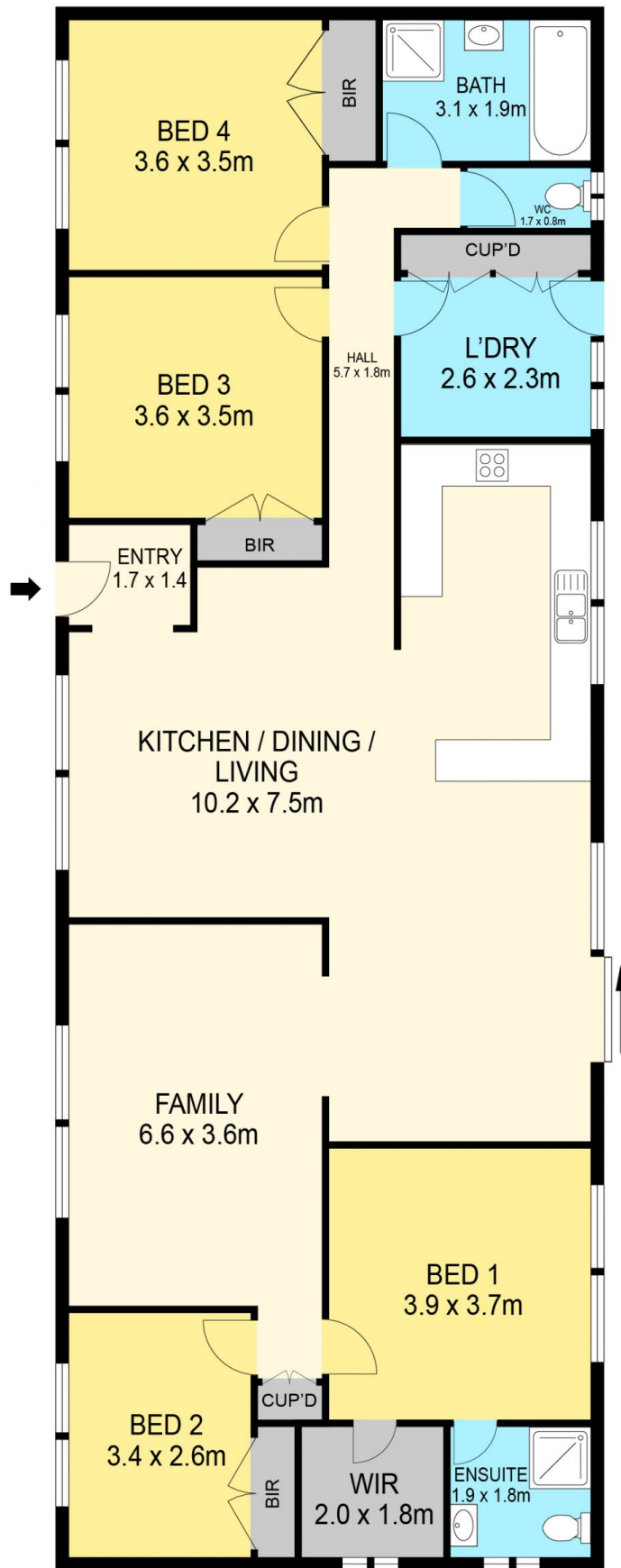
View : <https://www.ballaratrealestate.com.au/sale/vic/ballarat-western-district/winter-valley/commercial/other/8070363>



Blaise Newnham
5331 2233
0423175643



Brendan Elliott
03 5331 2233
0459 976 132



DISCLAIMER

PLANS SHOWN ARE FOR MARKETING PURPOSES ONLY, ALL DIMENSIONS ARE APPROXIMATE AND NOT TO SCALE. THEY ARE SUBJECT TO ERRORS AND INACCURACIES AND NO LIABILITY WILL BE ACCEPTED. INTERESTED PARTIES SHOULD MAKE THEIR OWN INQUIRES.

Ballarat
Real Estate

