



## 29 O'Brien Drive Alfredton VIC

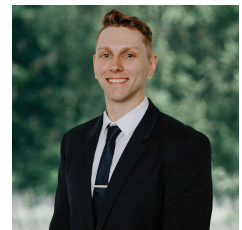
4 2 4

Welcome to your dream home nestled in the charming Ballymanus estate! This modern gem sits on a generous 680m<sup>2</sup> (approx) plot of land, offering both space and luxury. You'll be spoilt for choice with its prime location - just a short distance from Lucas Town Centre, Delacombe Town Centre and walking distance to the upcoming Alluvium Shopping Centre and beautiful parklands. Plus, it's in the prestigious Ballarat High School and Alfredton Primary School zone, making it perfect for a growing family to thrive. The home's stunning brick veneer facade is complemented by well-groomed front lawns and gardens. A double lock-up garage with a concreted side driveway provides ample secure parking, hinting at the excellence that awaits inside. Step inside to discover four spacious bedrooms, including a front-appointed master suite adorned with full-length sheer curtains, ...

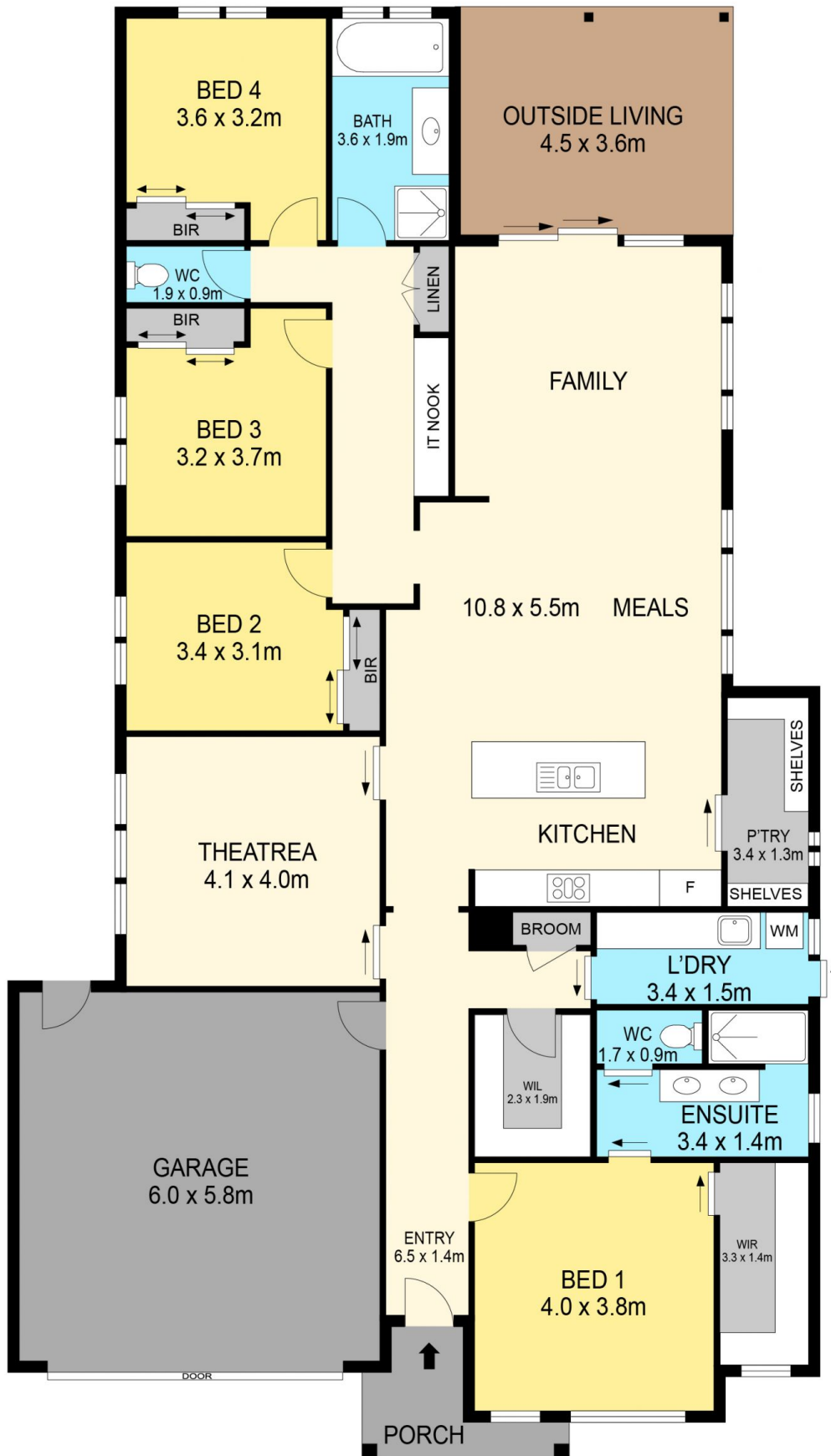
**Price** : \$700,000 - \$750,000  
**Land Size** : 680 sqm  
**View** : <https://www.ballaratrealestate.com.au/sale/vic/ballarat-western-district/alfredton/residential/house/8074885>



**Lachlan Sylvia**  
03 53312233  
0458 068 234



**Chris Just**  
5331 2233  
0438 235 293



#### DISCLAIMER

PLANS SHOWN ARE FOR MARKETING PURPOSES ONLY, ALL DIMENSIONS ARE APPROXIMATE AND NOT TO SCALE. THEY ARE SUBJECT TO ERRORS AND INACCURACIES AND NO LIABILITY WILL BE ACCEPTED. INTERESTED PARTIES SHOULD MAKE THEIR OWN INQUIRES.

**Ballarat**  
Real Estate

