



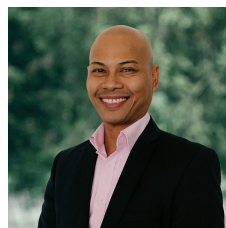
**20 Cassowary Way Winter Valley VIC**

4 2 2

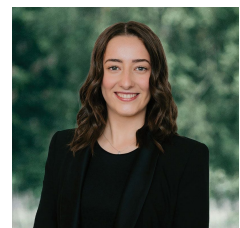
BOOK YOUR INSPECTION ONLINE 24/7 Click "Book an Inspection Time" to select a time that is suitable for you. Alternatively, go to our website [ballaratrealestate.com.au](https://www.ballaratrealestate.com.au) and press the BOOK INSPECTION button to register for a time that suits you.

**Land Size** : 411 sqm  
**View** : <https://www.ballaratrealestate.com.au/lease/vic/ballarat-western-district/winter-valley/residential/house/8090073>

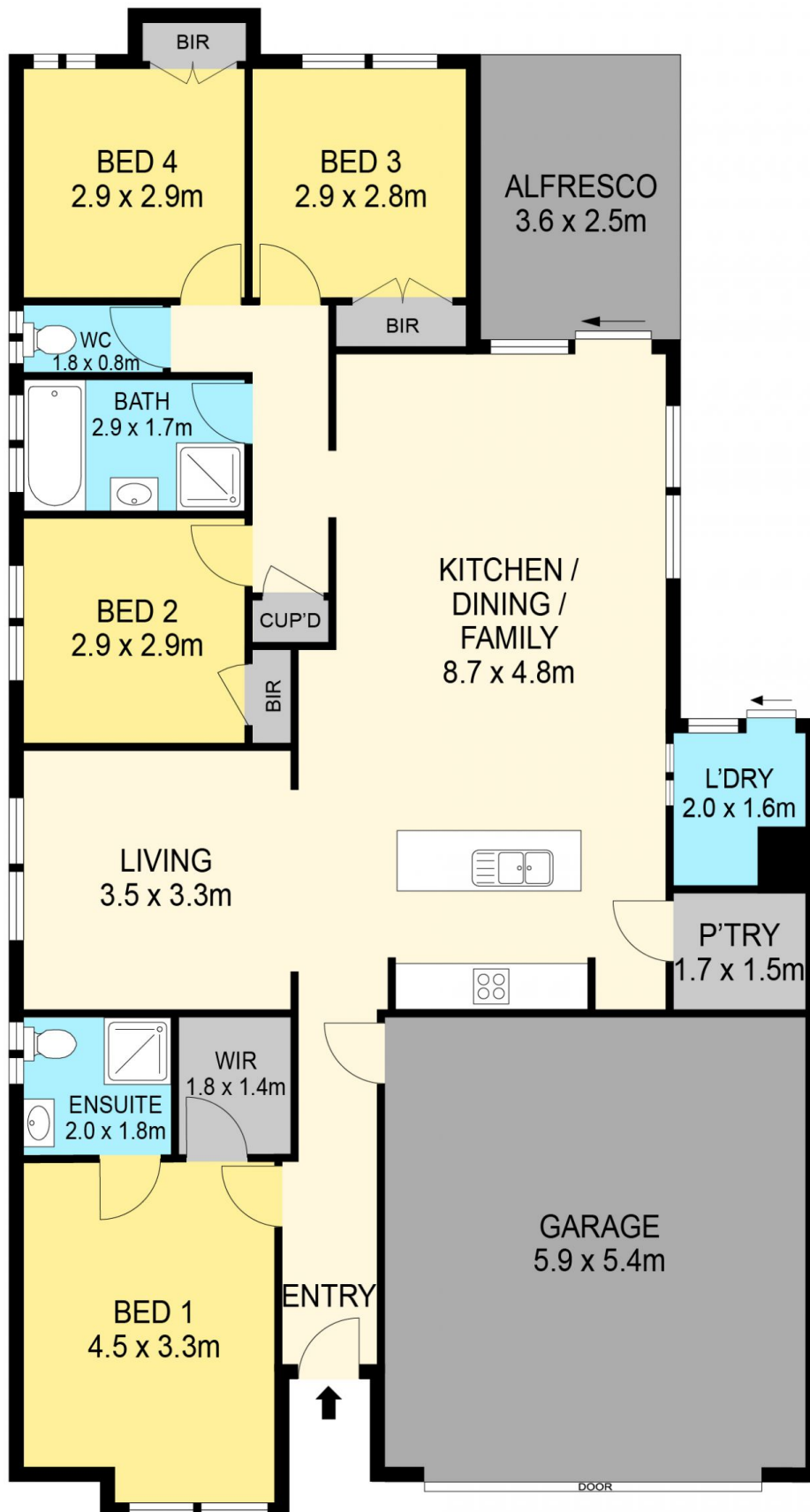
Nestled within the newly developed and rapidly expanding Carrigum Estate lies this modern family residence on a comfortable 411m2 (approx.) plot of land. Positioned within walking distance to park lands and the upcoming Alluvium Retail Hub, offering a variety of restaurants, retail outlets, supermarkets and essential services. Additionally, Coltman Plaza and Delacombe Town Centre are just moments away, while the home is also zoned for the prestigious Ballarat High School and Alfredton Primary School, making



**Reynaldo Rilen**  
03 53312233



**Mikayla Watt**  
5331 2233



**DISCLAIMER**

PLANS SHOWN ARE FOR MARKETING PURPOSES ONLY. ALL DIMENSIONS ARE APPROXIMATE AND NOT TO SCALE. THEY ARE SUBJECT TO ERRORS AND INACCURACIES AND NO LIABILITY WILL BE ACCEPTED. INTERESTED PARTIES SHOULD MAKE THEIR OWN INQUIRES.

**Ballarat**  
Real Estate

