

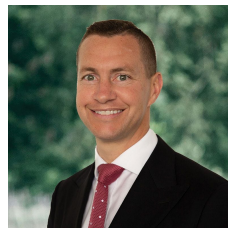


## 7A Westcliffe Crescent Sebastopol VIC

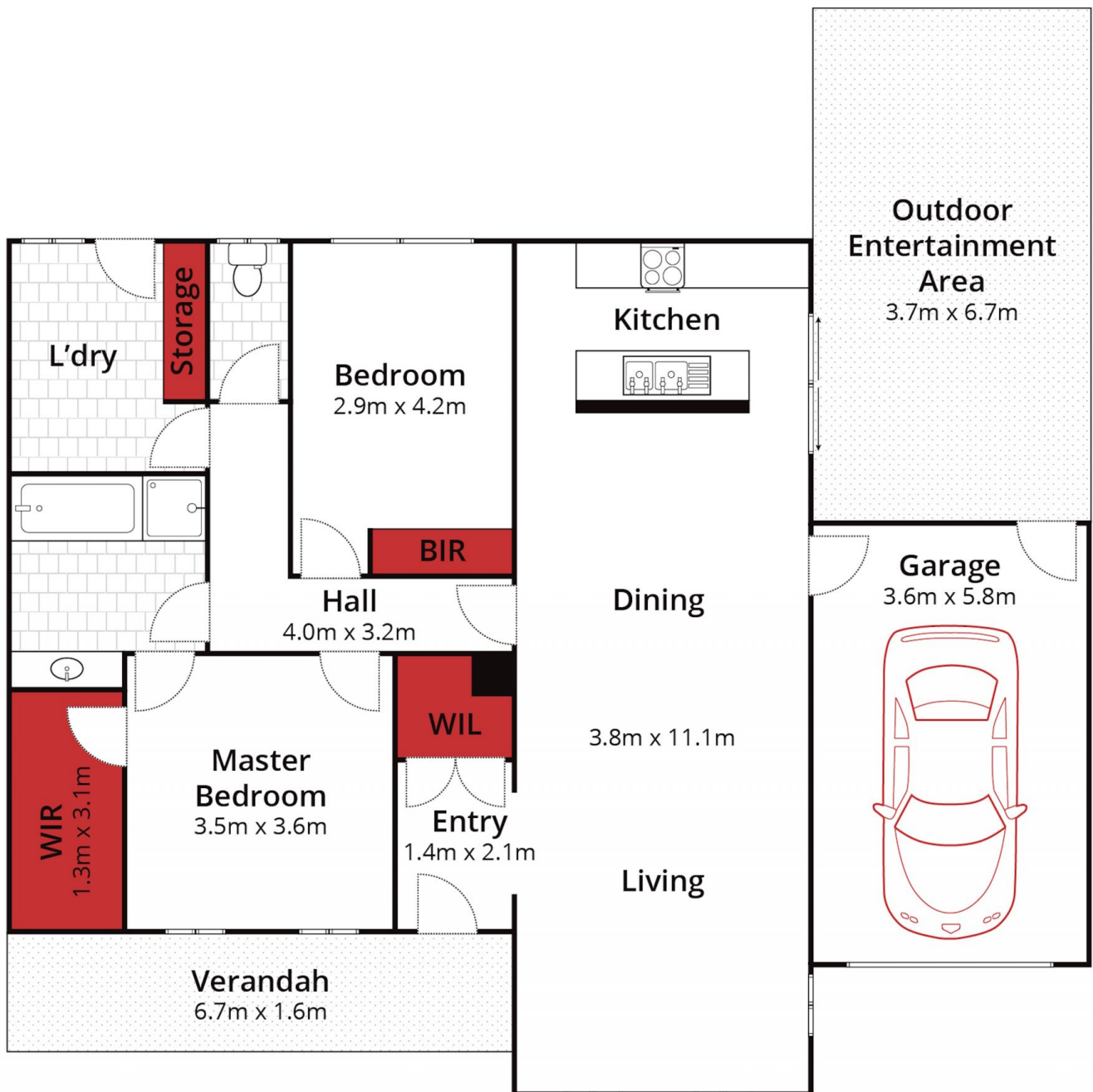
2 1 1

If you are seeking low-maintenance living, this property is perfect for you. It features two generously sized bedrooms, with the master bedroom offering a walk-in robe and access to a two-way bathroom, essentially serving as your own ensuite. The second bedroom also has built-in robes and is spacious. The open-plan kitchen, living, and dining area is ideal, with plenty of cupboard space and modern appliances. Off the dining area is a north-facing pergola and a low-maintenance yard. Additionally, the property includes central heating, reverse cycle air conditioning, and a single lock-up garage.

**Price** : \$345,000 - \$375,000  
**Land Size** : 346 sqm  
**View** : <https://www.ballaratrealestate.com.au/sale/vic/ballarat-western-district/sebastopol/residential/unit/8092502>



**Damian Larkin**  
03 53312233  
0417 088 755



Approx House Area 123m<sup>2</sup>  
Approx Land Area 346m<sup>2</sup>



Whilst [bwm.com.au](http://bwm.com.au) has made every attempt to ensure the accuracy of the floor plan contained here, measurements are approximate and no responsibility is taken for any error, omission, or mis-statement. This plan is for illustrative purposes only.

**7A Westcliffe Crescent, Sebastopol**

Ballarat  
Real Estate

