



### 25 Signature Drive Alfredton VIC

3 2 2

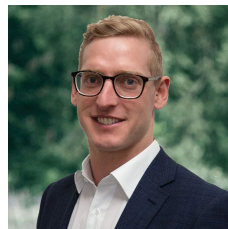
Welcome to 25 Signature Drive, a beautifully crafted Bryan & Peterson home situated in the prestigious Insignia Estate of Alfredton. This modern residence offers the perfect blend of style, comfort, and convenience, ideal for those seeking a low-maintenance lifestyle in a prime location.

This home features three generously sized bedrooms, including a master suite with its own private ensuite, providing a tranquil retreat for relaxation. The additional two bedrooms are well-appointed and share a sleek, modern bathroom.

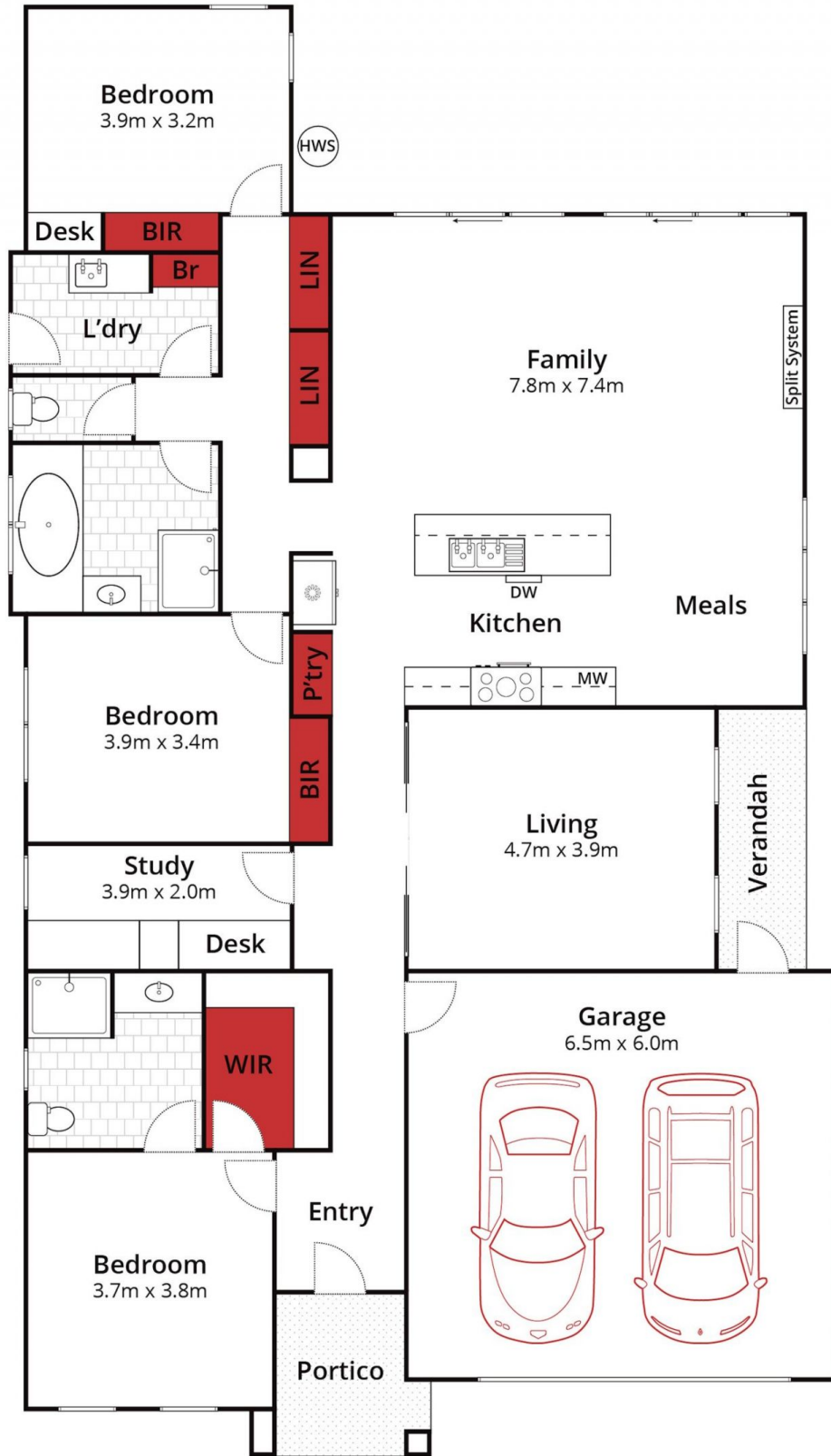
The heart of the home is the open-plan kitchen, dining, and living area, designed to maximize space and natural light. The kitchen is well-equipped with quality appliances, ample storage, and a functional layout, making it perfect for both

**Price** : \$720,000 - \$760,000

**View** : <https://www.ballaratrealestate.com.au/sale/vic/ballarat-western-district/alfredton/residential/house/8098333>



**Mitchell Couch**  
03 53312233  
0423543023



Approx House Area 235m<sup>2</sup>  
Approx Land Area 420m<sup>2</sup>



Whilst [bwrn.com.au](http://bwrn.com.au) has made every attempt to ensure the accuracy of the floor plan contained here, measurements are approximate and no responsibility is taken for any error, omission, or mis-statement. This plan is for illustrative purposes only.

**25 Signature Drive, Alfredton**

Ballarat  
Real Estate

