



#### 4 Hume Crescent Alfredton VIC

4 2 2

This property is perfect for those seeking a comfortable and updated home in the sought after Alfredton area. Comprising four bedrooms, master with BIR & ensuite. The home offers a bright large open lounge with an abundance of natural light. Adjoining is the open plan kitchen/meals and separate dining area with ample storage throughout and dishwasher. There is also a separate, large rumpus room which opens out onto a large undercover alfresco for year - round entertaining.

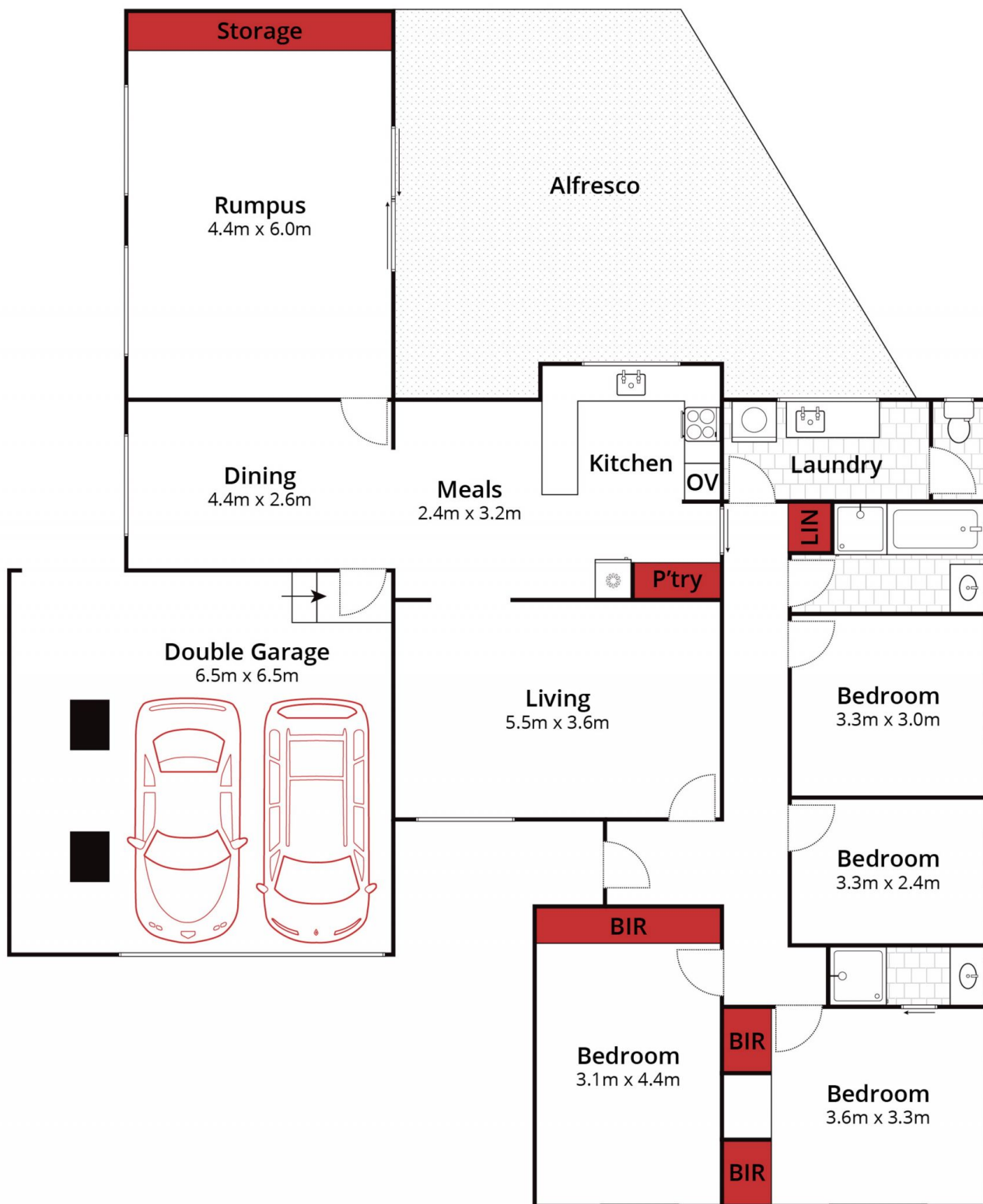
The laundry has been updated and is complete with sink and storage and separate toilet. The family bathroom is located close to the bedrooms and has been updated with shower, bath and vanity. Other features include garden shed and double garage. The property also boasts gas central heating, split system heating and cooling plus solar

**Land Size** : 726 sqm

**View** : <https://www.ballaratrealestate.com.au/lease/vic/ballarat-western-district/alfredton/residential/house/8099678>



**Tiarra Lockwood**  
03 53312233



Approx House Area 200m<sup>2</sup>

Approx Landsize Area 725m<sup>2</sup> 4 2 2

Whilst [bwrn.com.au](http://bwrn.com.au) has made every attempt to ensure the accuracy of the floor plan contained here, measurements are approximate and no responsibility is taken for any error, omission, or mis-statement. This plan is for illustrative purposes only.

**4 Hume Crescent, Alfredton**

**BALLARAT**  
REAL ESTATE