



15 Elise Road Winter Valley VIC

4 2 2

This quality four bedroom home is complete with features such as solar power, camera security and has a large outdoor entertaining space plus shedding. You will find yourself in a quiet, family orientated neighbourhood positioned directly across from the Yorkdale Estate Playground and park. This location is convenient to shopping, schooling and other amenities. The attractive facade holds street appeal and is telling of what can be found within. Inside you will find four well sized bedrooms, each equipped with built in robes and ceiling fans while the master is complete with a split system, walk in robe and full ensuite. The kitchen has a walk in pantry and island bench commanding from the centre, opening to the dining and living space. A second living area provides the home with more than enough space for everyone to enjoy. The family bathroom has a separat ...

Building Size : 171 sqm

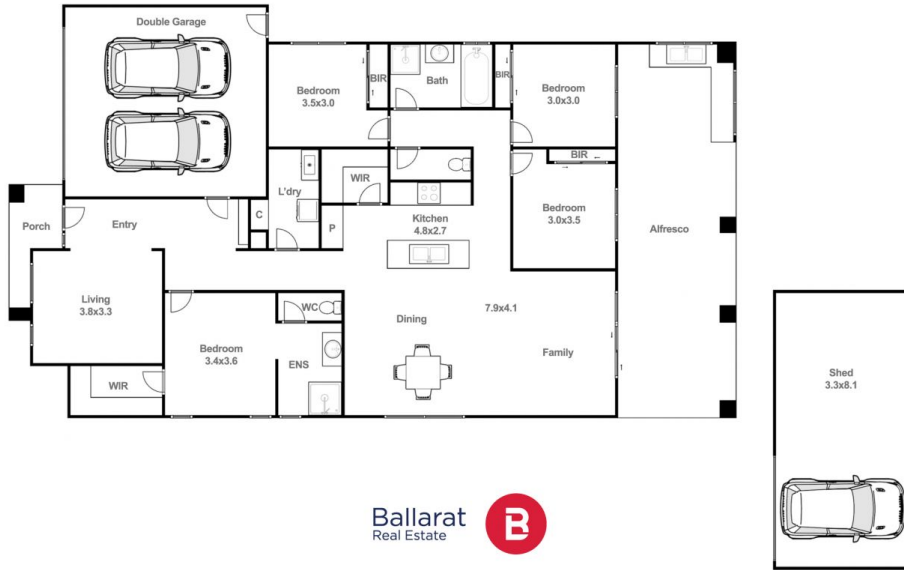
Land Size : 476 sqm

View : <https://www.ballaratrealestate.com.au/sale/vic/ballarat-western-district/winter-valley/residential/house/8119127>



Mitchell Burgess
03 5331 2233
0458019897

15 Elise Rd Winter Valley



Mitch Burgess 0458019897

This plan is for illustrative purposes only, floor plan proportions and scale are approximate. Plan prepared by PLP Ballarat © 2024 for Ballarat Real Estate.