



9 Emmy Drive Miners Rest VIC

4 2 2

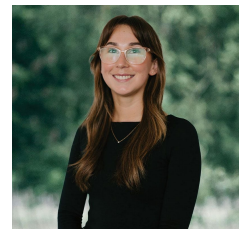
Nestled in the charming landscape of Miners Rest, this exquisite home captivates with views of picturesque parklands and Burrumbeet Creek. Set on an approximately 471m² allotment, the property generates \$460 per week in rent, with the tenant secured in lease until May 2025. Ideally located near Lucas Town Centre, Stockland Wendouree, schools, and offering easy access to the Western Highway. Boasting four bedrooms, including a master suite with a walk-in robe and ensuite. The home also features a kitchen equipped with gas cooking, a dishwasher, and ample storage, seamlessly flowing into an open-plan living and dining area that extends to an outdoor entertaining space. Year-round comfort is ensured with central heating, a split system, and ceiling fans throughout. The sizable yard adds family appeal, enhancing its rental potential. With essential services and ...

Price : \$530,000 - \$560,000

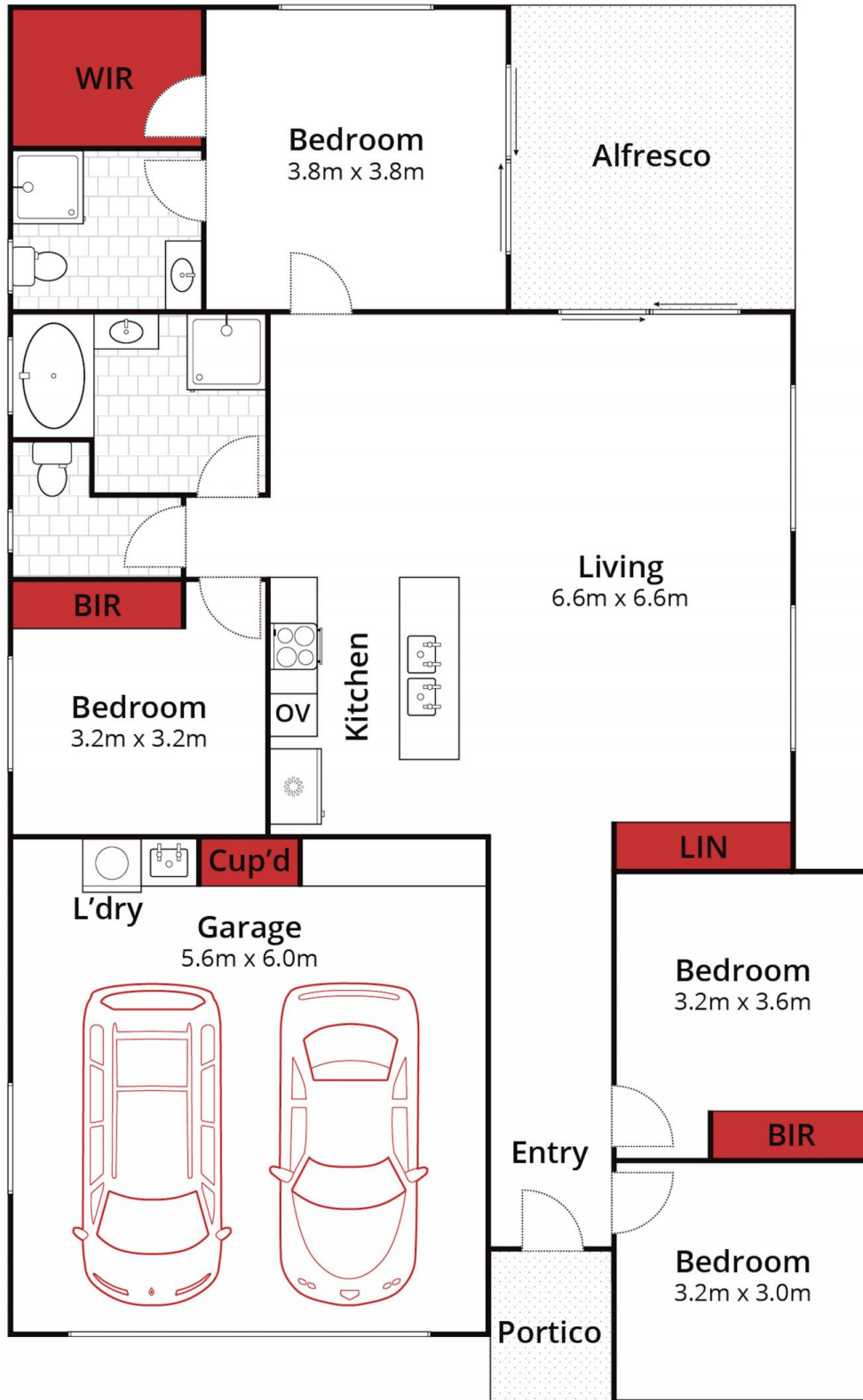
View : <https://www.ballaratrealstate.com.au/sale/vic/ballarat-western-district/miners-rest/residential/house/8143263>



David Morrison
5331 2233
0438 342 227



Chelsea Skewes
5331 2233
0448913072



Approx House Area 160m² 4 2 2

Whilst bwrn.com.au has made every attempt to ensure the accuracy of the floor plan contained here, measurements are approximate and no responsibility is taken for any error, omission, or mis-statement. This plan is for illustrative purposes only.

9 Emmy Drive, Miners Rest

Ballarat
Real Estate

