



57 Wattle Avenue Wendouree VIC

3 1

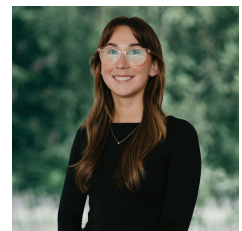
This property offers an excellent investment opportunity, ideally located near Stockland Shopping Centre, schools, and the Eureka Homemaker Centre. It is currently generating \$370 per week in rent, with the Renter in lease until May 2025. Situated on a generous 724m² (approx.) allotment, the home features three well-sized bedrooms, a tidy kitchen with an adjacent meals area, and a spacious living room with street-facing windows. The sizable yard is perfect for families, enhancing its rental appeal. With essential services and amenities nearby, this property is well-positioned to generate consistent rental income, making it a valuable asset for any investor's portfolio.

Price : \$370,000 - \$390,000

View : <https://www.ballaratrealestate.com.au/sale/vic/ballarat-western-district/wendouree/residential/house/8143359>



David Morrison
5331 2233
0438 342 227



Chelsea Skewes
5331 2233
0448913072

57 Wattle Avenue **Wendouree**



David Morrison 0438 342 227

This plan is for illustrative purposes only, floor plan proportions and scale are approximate. Plan prepared by PLP Ballarat © 2024 for Ballarat Real Estate.