



7 Kelvin Avenue Sebastopol VIC

3 1 1

BOOK YOUR INSPECTION ONLINE 24/7 Click "Book an Inspection Time" to select a time that is suitable for you. Alternatively, go to our website ballaratrealestate.com.au and press the BOOK INSPECTION button to register for a time that suits you.

Price : \$380.00 per week
Land Size : 628 sqm
View : <https://www.ballaratrealestate.com.au/lease/vic/ballarat-western-district/sebastopol/residential/house/8143530>

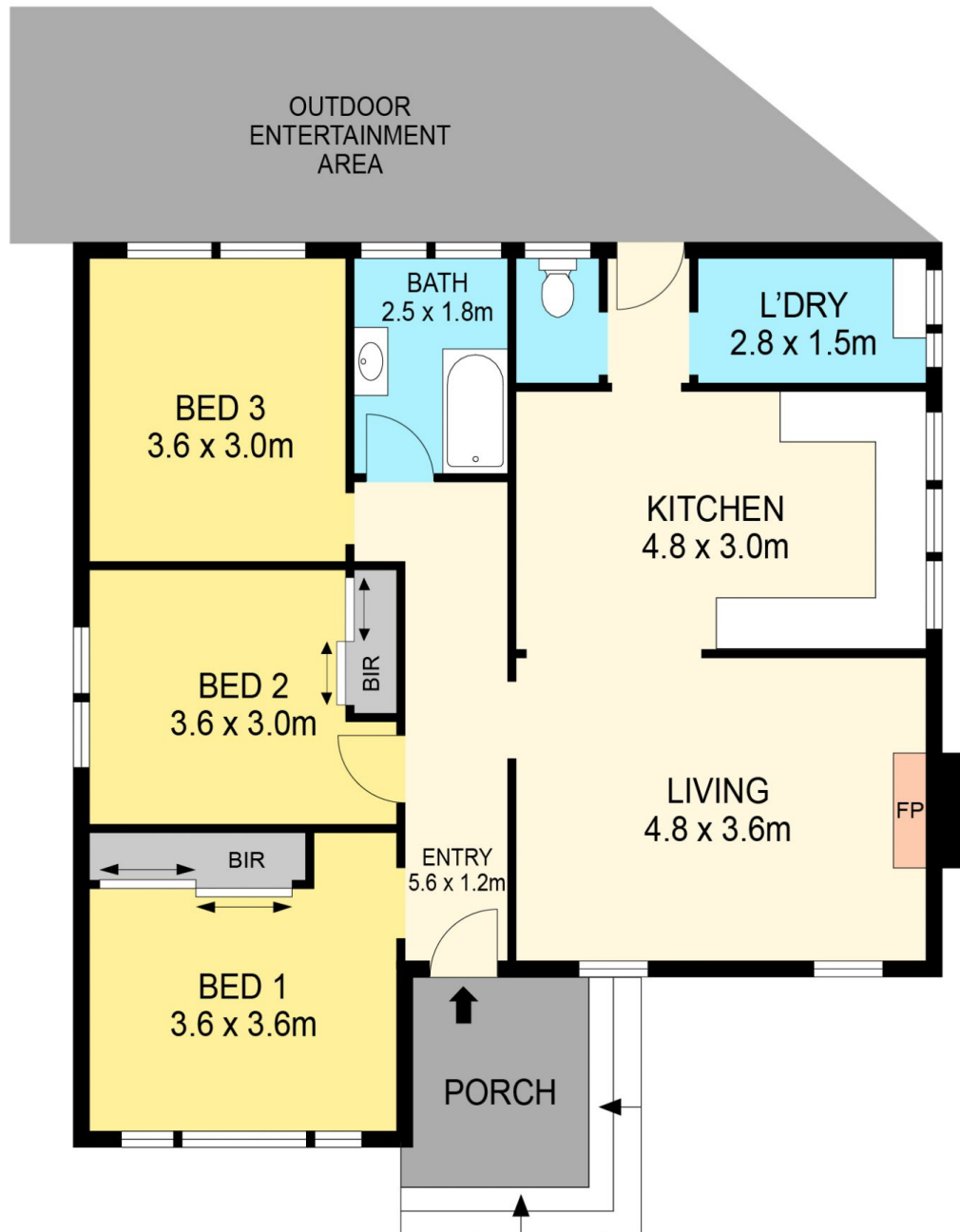
Nestled in the heart of Sebastopol, this exquisite home sits on a spacious 628m² (approx.) allotment, ensuring a comfortable living experience. Its prime location offers close proximity to both Primary & Secondary schools, supermarkets, The Delacombe Town Centre, and Midland HWY, making it an ideal place to call home. As you approach the house, you'll be captivated by its charming weatherboard façade, a concreted driveway with



Reynaldo Rilen
03 53312233



Leah Dickson
5331 2233



DISCLAIMER

PLANS SHOWN ARE FOR MARKETING PURPOSES ONLY. ALL DIMENSIONS ARE APPROXIMATE AND NOT TO SCALE. THEY ARE SUBJECT TO ERRORS AND INACCURACIES AND NO LIABILITY WILL BE ACCEPTED. INTERESTED PARTIES SHOULD MAKE THEIR OWN INQUIRES.

Ballarat
Real Estate

