



**20 Mullingar Drive Alfredton VIC**

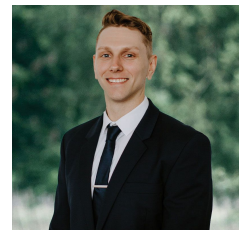
4 2 2

Nestled in the sought-after Ballymanus Estate, this stunning property spans a generous 639m<sup>2</sup> (approx), providing ample space for comfortable family living. Enjoy the convenience of nearby Lucas Town Centre, Delacombe Town Centre, parks, and the future Alluvium shopping complex, all within the Ballarat High School zone. The home welcomes you with a stylish brick veneer facade featuring modern rendered accents, complemented by a vibrant front garden and ample off-street parking with convenient side access. Inside, discover four spacious bedrooms designed with comfort in mind. The master suite, set privately at the rear, boasts a large walk-in robe, air conditioning, and a luxury ensuite complete with double vanity, roomy shower with a tiled niche, and a separate WC. The additional bedrooms include built-in robes and share a central bathroom with a single vani ...

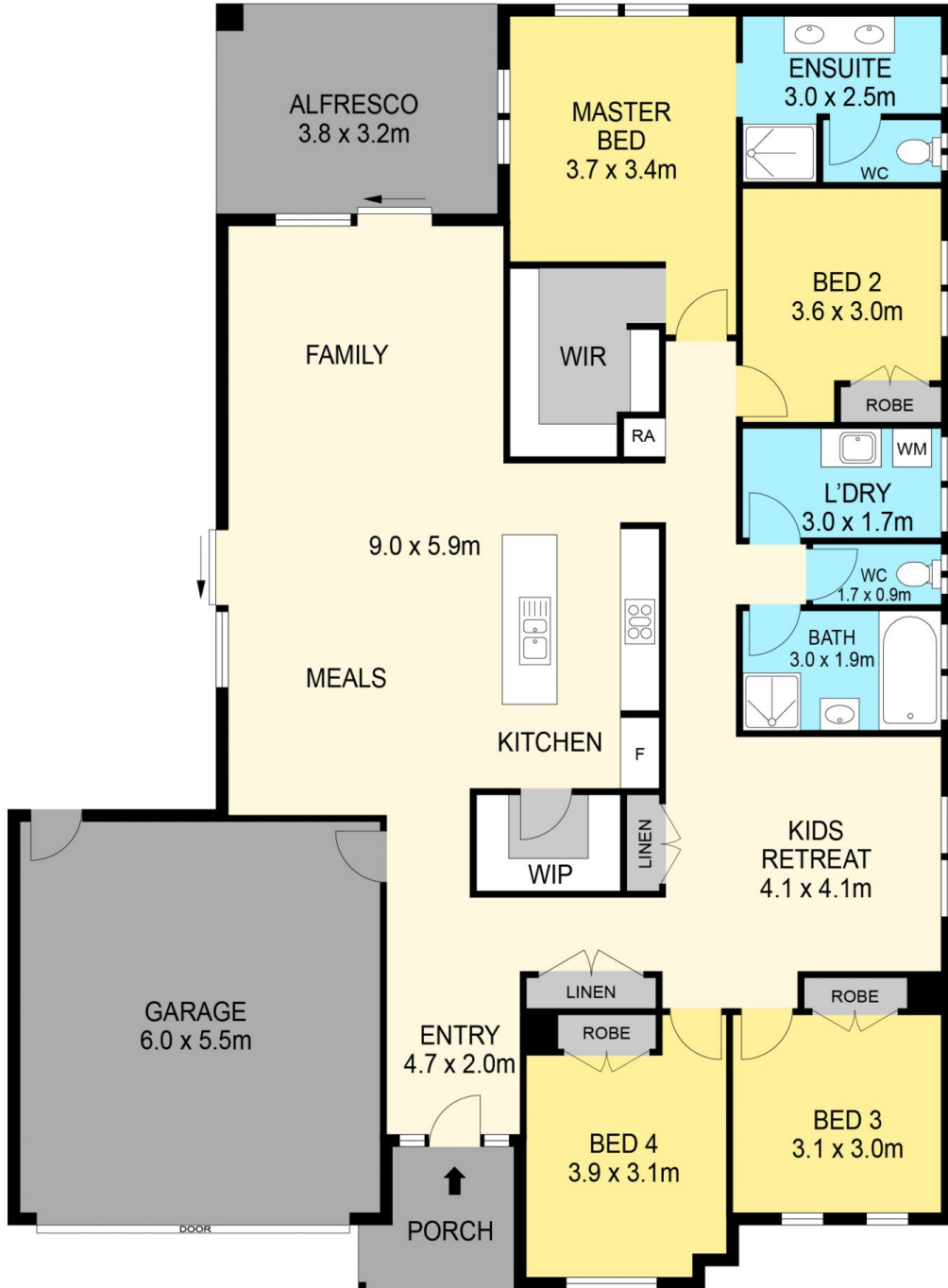
**Price** : \$695,000 - \$745,000  
**Land Size** : 639 sqm  
**View** : <https://www.ballaratrealestate.com.au/sale/vic/ballarat-western-district/alfredton/residential/house/8149601>



**Lachlan Sylvia**  
 03 53312233  
 0458 068 234



**Chris Just**  
 5331 2233  
 0438 235 293



**DISCLAIMER**

PLANS SHOWN ARE FOR MARKETING PURPOSES ONLY. ALL DIMENSIONS ARE APPROXIMATE AND NOT TO SCALE. THEY ARE SUBJECT TO ERRORS AND INACCURACIES AND NO LIABILITY WILL BE ACCEPTED. INTERESTED PARTIES SHOULD MAKE THEIR OWN INQUIRES.

**Ballarat**  
Real Estate

