



## 42 Yarra Park Drive Sebastopol VIC

3 2 1

Discover the perfect family haven in this charming home, nestled in the newer part of Sebastopol. Enjoy the convenience of nearby Delacombe Town Centre and the newly renovated Sebastopol Coles Shopping Centre. This beautiful family home greets you with a brick veneer façade, a veranda, and shade over the front living room window to keep the house cool during hot summer days. Inside, the cozy front living room features a warm feature wall. Moving through the house, you'll find a second living area with double sliding doors that open onto a covered paved area, perfect for unforgettable family barbecues. The home boasts three bedrooms in total, the master suite boasting walk in robe and an ensuite featuring a large shower and walk-in robe. The remaining two bedrooms feature built-in robes. There is one bathroom with a built-in bath, and the laundry includes bu ...

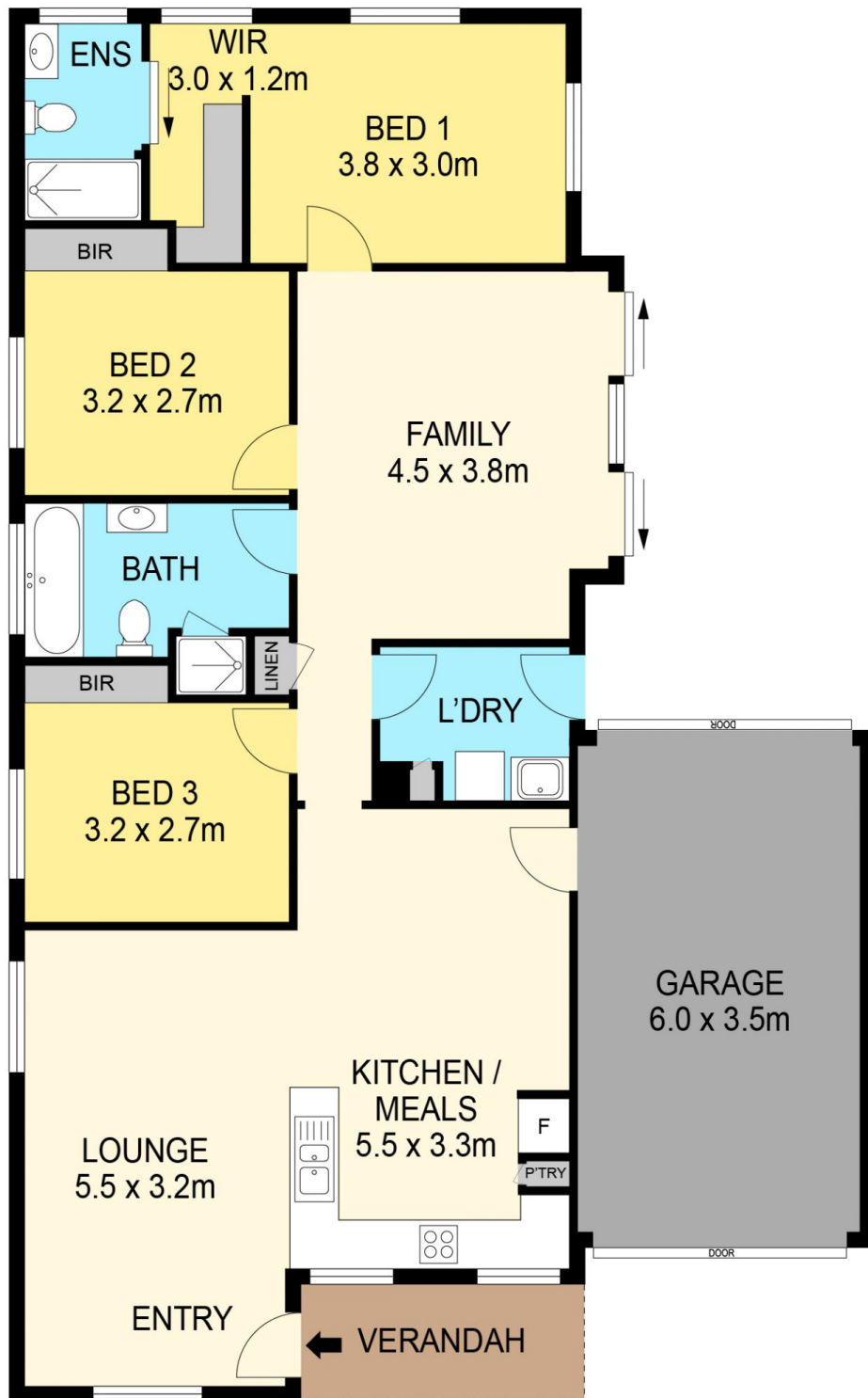
**Price** : \$420,000 - \$460,000  
**Land Size** : 300 sqm  
**View** : <https://www.ballaratrealestate.com.au/sale/vic/ballarat-western-district/sebastopol/residential/house/8180404>



**Lachlan Sylvia**  
03 53312233  
0458 068 234



**Tom Lineker**  
03 5331 2233  
0476 222 418



#### DISCLAIMER

PLANS SHOWN ARE FOR MARKETING PURPOSES ONLY. ALL DIMENSIONS ARE APPROXIMATE AND NOT TO SCALE. THEY ARE SUBJECT TO ERRORS AND INACCURACIES AND NO LIABILITY WILL BE ACCEPTED. INTERESTED PARTIES SHOULD MAKE THEIR OWN INQUIRIES.

Ballarat  
Real Estate

